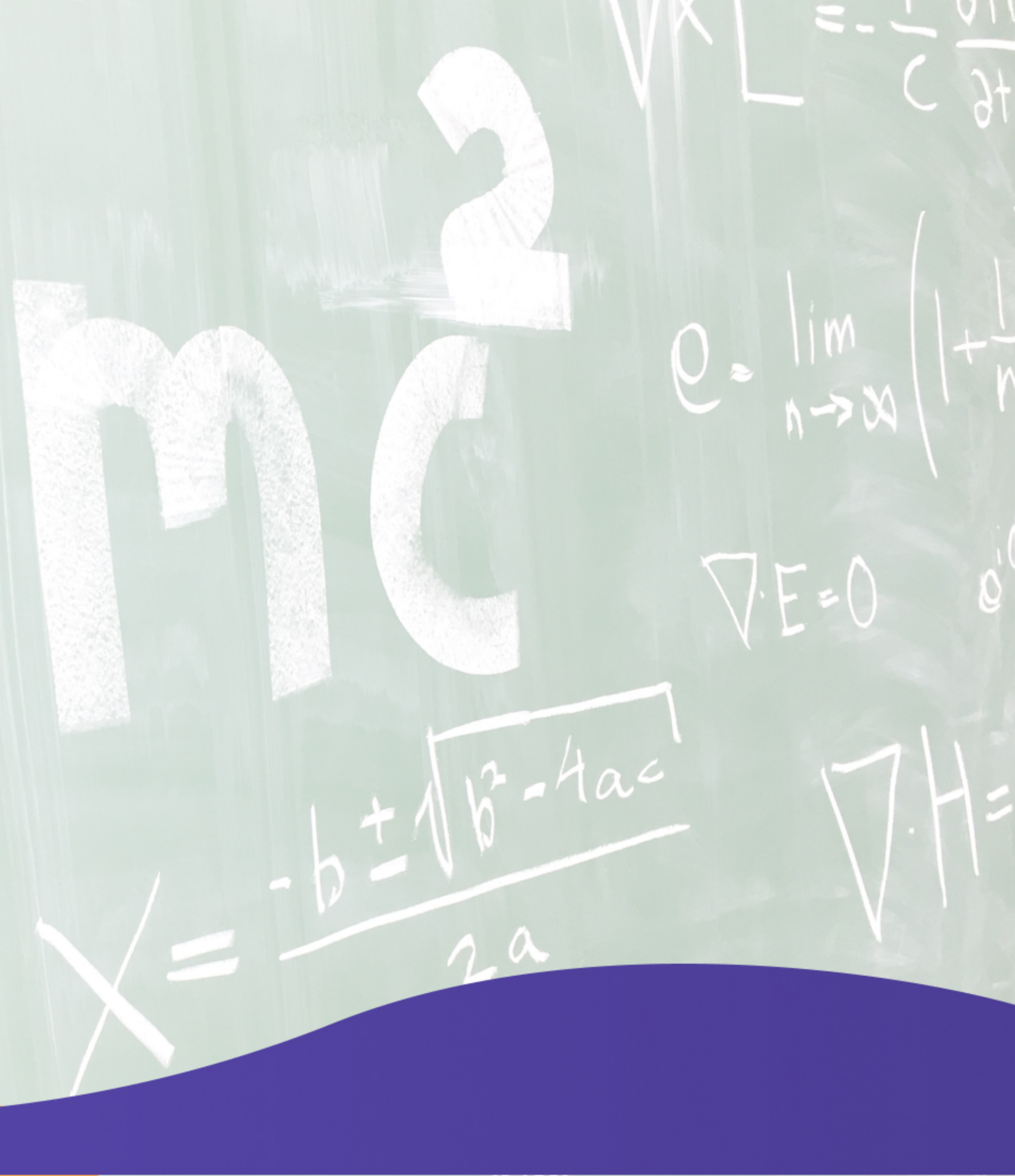


# Premium Custom Purple Shampoo Services by **BUNIQUE**



# CONTENTS

- Introduction to BUNIQUE
- The Science of Purple Shampoo
- Customization Options
- Global Compliance and Quality
- Our Process: From Concept to Shelf
- Get Started with BUNIQUE

01

# Introduction to BUNIQUE

$$x = \frac{-b \pm \sqrt{b^2 - 4ac}}{2a}$$

$$e = \lim_{n \rightarrow \infty} \left( 1 + \frac{1}{n} \right)^n$$

$$\nabla \cdot E = 0$$

$$\nabla \cdot H =$$

# Introduction to BUNIQUE

---

- **Your Partner in Beauty:**  
Elevating hair care experience.
- **Our Philosophy:**  
Commitment to excellence and sustainability.





# Your Partner in Beauty

## **Expertise in Hair Care:**

BUNIQUE specializes in custom purple shampoos tailored for salons and brands.

## **Focus on Quality:**

We prioritize high-quality ingredients and effective formulas to achieve optimal results.

## **Competitive Edge:**

Stand out in a saturated market with a product designed for superior performance.

# Our Philosophy



## **Customer-Centric Approach:**

We build strong relationships with our clients, focusing on their unique needs.

## **Sustainable Practices:**

Our formulations are eco-friendly, supporting a greener tomorrow for beauty industry.



02

## The Science of Purple Shampoo

$$x = \frac{-b \pm \sqrt{b^2 - 4ac}}{2a}$$

$$e = \lim_{n \rightarrow \infty} \left( 1 + \frac{1}{n} \right)^n$$

$$\nabla \cdot E = 0$$

$$\nabla \cdot H =$$

# The Science of Purple Shampoo

- 1 Neutralizing Brassiness:**  
Key to perfect blonde.
- 2 Benefits of Custom Formulation:**  
Tailored solutions for specific needs.
- 3 Elevated User Experience:**  
Enhancing your clients' journey.

## BUNIQUE Anti-Yellow Shampoo

By combining deep violet micro-pigments with our proprietary Color-Lock Complex, this shampoo doesn't just mask brassiness—it transforms the hair fiber. The sulfate-free formula ensures that even the most fragile, pre-lightened hair remain hydrated and structurally sound.





# Neutralizing Brassiness

## **Pigment Power:**

High-potency violet pigments target unwanted yellow and orange tones.

## **Chemistry Meets Beauty:**

Our formulations balance effective neutralization with nourishing ingredients.

## **Long-Lasting Results:**

Our shampoos ensure vibrancy that lasts, maintaining salon-fresh color.

# Benefits of Custom Formulation

Benefit	Description	Importance
Neutralization	Effectively combats brassiness in blondes	Essential for cool-toned color
Hydration	Enriched with botanicals for moisture	Prevents dryness and damage
Customization	Personalized scents, colors, and packaging	Reflects your brand identity

# Elevated User Experience



01

## **Rich Lather:**

Our shampoos create a luxurious foam for a pleasurable wash.

02

## **Enticing Fragrance:**

Unique scents elevate the overall hair care experience.

03

## **User-Friendly Application:**

Designed for simplicity, ensuring perfect use every time.

03

# Customization Options

$$x = \frac{-b \pm \sqrt{b^2 - 4ac}}{2a}$$

$$e = \lim_{n \rightarrow \infty} \left( 1 + \frac{1}{n} \right)^n$$

$$\nabla \cdot E = 0$$

$$\nabla \cdot H =$$

# Customization Options



## Tailored Formulations

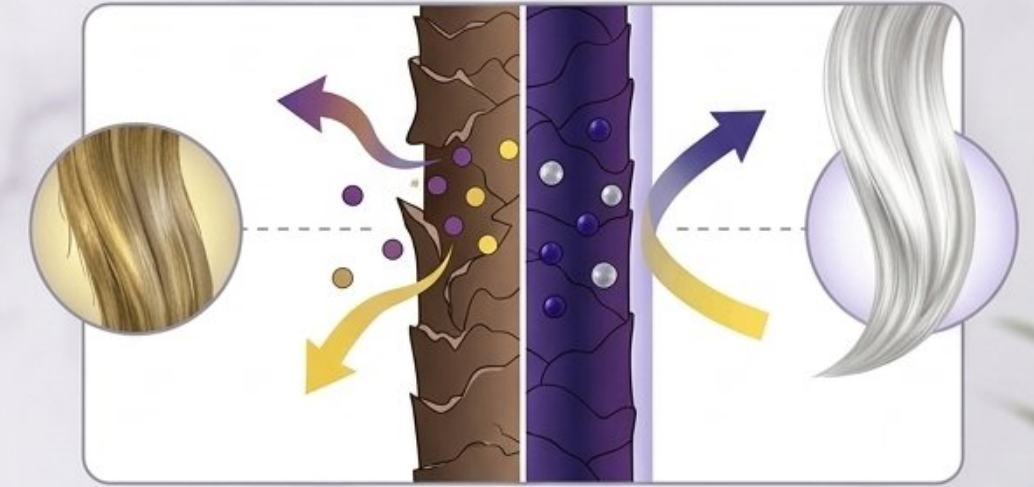
Make it your own.



## Full-Service Offering

We handle everything from A to Z.

## COLOR-LOCK TECHNOLOGY:



A botanical blend of Sunflower Seed Extract and Hydrolyzed Quinoa that seals the cuticle, locking in pigment and locking out dullness.



Sunflower Seed Extract



Hydrolyzed Quinoa



# Tailored Formulations

## Color Intensity:

Adjust the violet pigment strength for your client's hair needs.

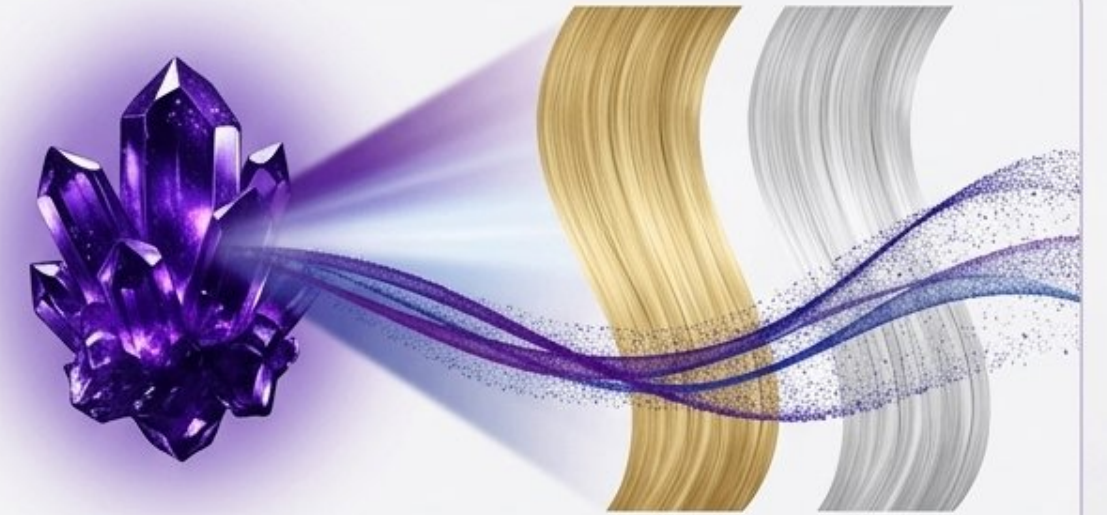
## Fragrance Selection:

Choose from a variety of scents that embody your brand essence.

## Packaging Design:

Create visually appealing, eco-friendly packaging that resonates with consumers.

## Key Performance Pillars:



**The Violet Correction:** Instantly neutralizes stubborn yellow and orange undertones using professional-grade Ext. D&C Violet No. 2.



# Full-Service Offering

## **Design Support:**

Collaborate with our team for attractive label and package design.

## **Brand Identity:**

We help build a cohesive identity aligning with your business image.

04

## Global Compliance and Quality

$$x = \frac{-b \pm \sqrt{b^2 - 4ac}}{2a}$$

$$e = \lim_{n \rightarrow \infty} \left( 1 + \frac{1}{n} \right)^n$$

$$\nabla \cdot E = 0$$

$$\nabla \cdot H =$$

## Global Compliance and Quality

- **Manufacturing Standards:**  
Commitment to safety and reliability.
- **Market Ready:**  
Easy entry into your target markets.

# HIGH-MARGIN POTENTIAL

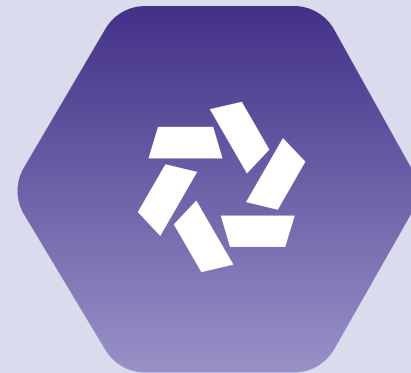
Compact, premium packaging (400ml)  
designed for both backbar efficiency  
and high-end retail turnover.



# Manufacturing Standards

## Partner Recruitment: Join the BUNIQUE Network

Elevate Your Salon or  
Distribution Portfolio



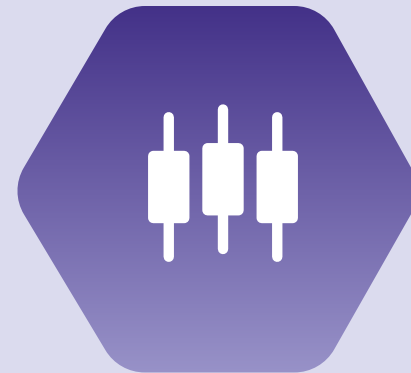
### **International Certification:**

Our products comply with global hair care regulations.



### **Quality Assurance:**

Rigorous QC processes ensure that every bottle meets our high standards.



### **Safe Ingredients:**

Our formulations are free from harmful chemicals, prioritizing safety.

# Market Ready

## **Versatile Packaging:**

Adaptable designs suitable for various countries and climates.



## **Localization**

### **Capabilities:**

Customized marketing strategies to fit cultural preferences.

**05**

**Our Process: From Concept to Shelf**

$$x = \frac{-b \pm \sqrt{b^2 - 4ac}}{2a}$$

$$e = \lim_{n \rightarrow \infty} \left( 1 + \frac{1}{n} \right)^n$$

$$\nabla \cdot E = 0$$

$$\nabla \cdot H =$$

mc2

# Our Process: From Concept to Shelf



## **Collaboration Steps:**

Seamlessly bringing your vision to life.

## **Efficient Production:**

A reliable partner in manufacturing.

## **Launch Support:**

We are with you every step of the way.

# Collaboration Steps

leverage the marketing power  
and superior quality of  
Japanese-formulated chemistry.



01

## Initial Consultation:

Discuss goals, target audiences, and product needs.

02

## Research and Development:

Our lab creates and refines formulas based on your feedback.

03

## Design Phase:

We help craft an eye-catching look that stands out.

# Efficient Production

Step	Description	Duration
<b>Formula Development</b>	Custom formula creation	4-6 weeks
<b>Production</b>	High-quality manufacturing	2-4 weeks
<b>Launch Strategy</b>	Go-to-market plan preparation	3 weeks

# Launch Support



## **Marketing Strategy:**

Assistance in promoting your new product effectively.



## **Feedback Loop:**

Continuous improvements based on customer feedback for future iterations.

06

**Get Started with BUNIQUE**

$$x = \frac{-b \pm \sqrt{b^2 - 4ac}}{2a}$$

$$e = \lim_{n \rightarrow \infty} \left( 1 + \frac{1}{n} \right)^n$$

$$\nabla \cdot E = 0$$

$$\nabla \cdot H =$$

mc2

# Get Started with BUNIQUE

---

- **Contact Us:**  
Ready to create your signature line.
- **Get in Touch:**  
Let's make something beautiful together!



# Contact Us



01

## How to Reach Us:

Visit our website or contact us via WhatsApp for inquiries.

02

## Start Your Project:

Simple steps to initiate your custom project with a dedicated team.

03

## Innovation Awaits:

Don't settle for generic; elevate your brand with our premium solutions.

**Website:**

[www.buniquebeauty.com](http://www.buniquebeauty.com)

**WhatsApp Global:**

+852-6355-1978

**WhatsApp Direct:**

+86-186-8024-3286 in  
English.

**THE END**  
**THANKS**

$$x = \frac{-b \pm \sqrt{b^2 - 4ac}}{2a}$$

$$e = \lim_{n \rightarrow \infty} \left(1 + \frac{1}{n}\right)^n$$

$$\nabla \cdot E = 0$$

