

BUNIQUE: Super Moisturizing Repair Hair Mask

BUNIQUE

Hair Mask



CONTENTS

- Core Formula
- Target Audience
- The BUNIQUE Advantage
- The Science Behind BUNIQUE
- Application Guidelines
- Partnership Opportunities



01

Core Formula

Core Formula



- 01 Ingredient Synergy:**
Key aspects of the formula.
- 02 Efficacy Overview:**
Formula impact.
- 03 Moisturizing Action:**
Hydrating benefits.

BUNIQUE HAIR TRANSFORMED

BEFORE



Dull, Frizzy,
Damaged

AFTER



Silky, Smooth,
Luminous



Ingredient Synergy

Hydrolyzed Keratin:

Smaller protein molecules restore strength and elasticity.

Ubiquinol:

A potent antioxidant that protects from oxidative stress.

Triple-Moisture Barrier:

Mimics natural lipids, sealing in moisture without heaviness.

Efficacy Overview



Feature	Benefit	Importance
Hydrolyzed Keratin	Structural restoration	Reinforces hair integrity
Ubiquinol	Color protection	Prevents fading and aging
Moisture Sealing	Lightweight finish	Avoids greasy build-up

THE EVOLUTION OF CARE

Simple. Hygienic. Advanced.



Easy-press
effortless, precise
dispensing with a
clean pump.



Hygienic application;
prevents product
contamination.



Moisturizing Action

Moisture

Retention:

Locks in hydration
for healthy-
looking hair.

Frizz Control:

Smooths cuticles
for a sleek
appearance.

Volume

Maintenance:

Provides moisture
without weighing
hair down.



02

Target Audience

BUNIQUE: Super Moisturizing Repair Hair Mask

The Molecular Rescue for Parched & Damaged Hair.



Target Audience

Consumer Insights:
Who it's for.

Distinctions:
Key pain points addressed.

User Testimonials:
Real feedback.

TRANSFORM DRY TO DIVINE



Consumer Insights

Color-Treated Hair:

Ideal for users with damaged, porous strands.

Frizz-Prone Types:

Great for those battling humidity and texture challenges.

Busy Professionals:

Perfect for quick salon-quality results in minutes.

Distinctions



Issue	Solution	Benefit
Mid-Length Breakage	Reinforcement	Reduces snapping
Dullness	Adds shine	Enhances light reflection
Manageability	Easy detangling	Decreases styling time

REVEAL YOUR DIVINE SHINE
REVEAL YOUR DIVINE SHINE



User Testimonials

Quick Results:

Users report visible transformation in just minutes.

Improved

Texture:

Users love the silky feel after application.

Less Frizz:

Many note a significant reduction in flyaways.



03

The BUNIQUE Advantage



The BUNIQUE Advantage

Market

Potential:
Business opportunities.

Strategic

Benefits:
Competitive edge.

Distribution

Goals:
Growth strategies.

CORE FORMULA & INGREDIENT SYNERGY

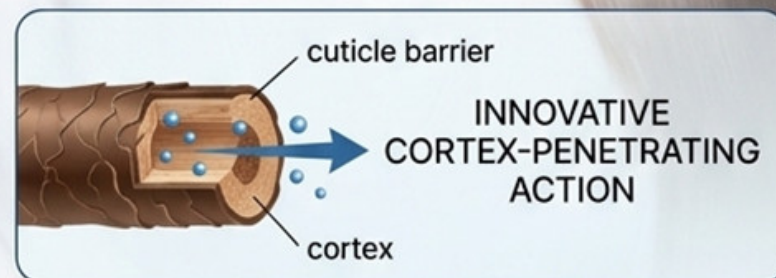


Advanced
Nano-Encapsulation
Delivery System

Deep
Hydration
Actives

Anti-Frizz
Sealers

Ensures active ingredients penetrate the cuticle, rather than simply sitting on the surface.



BUNIQUE

Market Potential

High-Retention Product:

Strong demand in the masstige beauty segment.

Professional Appeal:

Positioned for salon clients seeking value.

Growing Trend:

Aligns with increasing popularity of hair repair products.

Strategic Benefits



Feature	Competitive Advantage	Market Impact
Innovative Ingredients	Superior formulation	Sets BUNIQUE apart
Weightless Smoothing	Appeals to broader audiences	Captures diverse user base
Professional Quality	At-home convenience	Boosts customer loyalty

Structural Reconstruction (Hydrolyzed Keratin):

Smaller protein molecules that “fill in” the gaps in damaged hair shafts, restoring tensile strength and elasticity



Distribution Goals

Partner

Engagement:

Actively seeking regional agents for global reach.

Operational

Responsibility:

Clear divisions of R&D and local logistics.

Brand

Scalability:

Efforts are underway for expansive market growth.



04

The Science Behind BUNIQUE

MASTER THE ELEMENTS WITH BUNIQUE

The Frizz-Prone: Individuals living in high-humidity environments or those with naturally unruly, coarse texture



- 💧 DEEP HYDRATION
- 🪄 FRIZZ CONTROL
- ☂️ HUMIDITY SHIELD
- ✨ SEEKING SHINE

The Science Behind BUNIQUE

Technical Insights:
Formula components.

Technical Benefits:
Formulation science.

Research Findings:
Efficacy backed by science.



THE TRIPLE-MOISTURE BARRIER

A precise blend of amodimethicone, sodium PCA, and behentrimonium chloride. These work in tandem to mimic the hair's natural lipid layer, sealing in moisture without the heavy, greasy buildup often found in traditional masks.

Technical Insights

Isohexadecane & Isododecane:
Ensures a light finish without silicone heaviness.

Amodimethicone
:
Adds a protective barrier without excess weight.

Sodium PCA:
Natural moisture-binding agent that enhances hydration.

Technical Benefits

Ingredient	Role	Outcome
Hydrolyzed Keratin	Structural Support	Bonds to damaged areas
Ubiquinol	Antioxidant	Protects against aging
Triple Moisture Blend	Hydration	Provides lasting softness

Research Findings

1

Clinical Validation:

Proven results from independent testing.

2

Consumer Research:

Positive feedback on texture and hydration.

3

Expert Endorsements:

Recommendations from hair care professionals.

FOR COLOR-TREATED & CHEMICALLY PROCESSED HAIR

Users whose hair feels "straw-like" or porous due to frequent bleaching, perming, or heat styling.



DAMAGED & POROUS

RESTORED & SMOOTH



05

Application Guidelines

THE GLASS HAIR SECRETS

TRANSFORM DULLNESS



Cuticle Smoothing Technology:
Seals in moisture for a flawless
surface.

Application Guidelines

Usage

Instructions:
Maximize
effectiveness.

FAQ:

Common
queries
answered.

User Tips:

Enhance results.



SALON RESULTS IN A RUSH.
For The Time-Poor Professional
Experience a luxurious transformation in only 5-10 minutes.

BUNIQUE
Super Moisturizing Repair Hair Mask
Deep Hydration & Frizz Control
Seals in long-lasting hydration.
Tames frizz for a sleek, healthy finish.
500ml/16.91oz

Usage Instructions

Start with Clean Hair:
Apply to damp hair for best penetration.

Wait Time:
Allow 5-10 minutes for ingredients to work effectively.

Rinse Thoroughly:
Ensure all product is removed for optimal results.

FAQ



Question

Answer

How often should I use it?

Once a week or as needed.

Can it be used on all hair types?

Yes, suitable for any hair texture.

Is it color-safe?

Yes, designed to protect color-treated hair.

Mid-Length Breakage:

Reinforces the weakest parts of the hair to prevent snapping.



User Tips

Combine with Other Products:

For added benefits, mix with a leave-in conditioner.

Heat Activation:

Use with a warm towel for deeper penetration.

Regular Maintenance:

Consistency leads to best long-term results.



06

Partnership Opportunities



Partnership Opportunities

Collaboration Model:
How to partner.

Join the Movement:
Invitation to partners.

Contact Information:
How to reach us.

Collaboration Model

Regional Agents Wanted:

Looking for partners to expand market presence.

Shared Responsibilities:

R&D for us, logistics for partners.

Mutual Growth:

Focused on scaling BUNIQUE globally together.

Manageability Issues:
Drastically reduces
detangling time and
prevents 'flyaways' caused
by static and dryness.



Join the Movement

Collaboration Type	Role	Benefits
Distribution Partners	Manage logistics	Access to new markets
Marketing Affiliates	Promote brand	Revenue-sharing opportunities
Retail Collaborations	Placement in stores	Increased visibility

Contact Information

- **WhatsApp:**
+852-6355-1978 | +86-186-8024-3286 for inquiries.
- **Partnership Interest:**
Let's redefine the hair repair category together.



THE END
THANKS

